

PERIODONTAL, SRP AREAS



SRP Area	56
500H Series	57
206H.1 Series	58



Periodontal Surgery Area	61
004 Model	62
901 C Model	64
Other Models	64



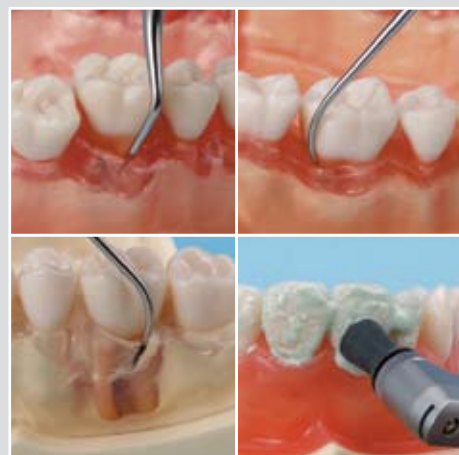
Plaque Control Area	65
---------------------------	----



Periodontal Area - SCALING / ROOT PLANING AREA

The SRP Model Series. A Wide Variation for Mastering the Scaling and Root Planing Area.

The SRP Model Series has a wide selection of models that have altered tooth root forms, gingiva, and alveolar bone conditions, and you can make your choices according to the training purpose and level. By adhering artificial dental calculus to the model, you can do a more clinical SRP practice.



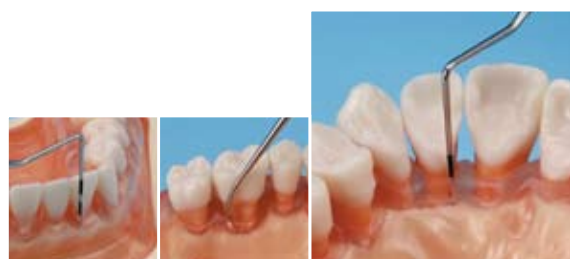
Simple Root Tooth Model with a Normal Condition / 500H Series

The 500H Series is a model that represents a normal gingiva and alveolar bone condition designed to understand and learn basic techniques in the early stages of training, such as insertion methods, how to hold the instruments, exploring and scaling.



Simple Root Tooth Model with a Furcation Defect / 206H Series

The 206H Series has a root furcation tooth model attached to the molar region, and allows practice of the root furcation region. The alveolar bone has horizontal resorption as well as vertical resorption such as furcation defect and dehiscence bone defects, so that subgingival practice is possible.



Anatomical Root Tooth Model with a Combination of Lesion Condition and Normal Condition / DOT.2 Model

The DOT.2 Model is fitted with an anatomical root form tooth model, and has a lesion condition on the left side and a normal condition on the right side. The lesion area provides horizontal resorption, and allows practice which considers bone defect and tooth root form. The normal area is good for basic practice such as learning how to hold the instruments.



Anatomical Root Tooth Model with Various Lesions such as Furcation Lesions and Tooth Malalignment / X.770 Model

The X.770 Model offers various periodontal lesions, and this allows for a more clinical practice. The model is fitted with tooth models that have furcated tooth roots, so you can practice while presuming the degree of progression of the furcation lesion and multiple roots. It also offers various bone defect patterns as well as tooth malalignment and wisdom tooth, so you can do a more practical scaling practice.



500H series

Normal Condition Simple Root Tooth Model



D16FE-500H(GSF) Pink

SRP Jaw Model [D16FE-500H(GSF)-QF]

Jaw model with a normal gingiva/alveolar bone condition presuming primary SRP practice. Because the model is fitted with a soft-type gingiva, you can learn basic techniques while experiencing gingival resistance. Also, it is fitted with a simplified root form tooth model, so it is easier to see the relationship between the blade of the scaler and the tooth angle during scaling.

- Variation**
- D16D-500H(GSF) (with D Articulator) •D16DP-500H(GSF) (with DP Articulator)
 - D16-500H(GSF) (without Articulator)

- Replacement Parts**
- Simple root tooth model / A5A-500 •Gingiva for 500H (pink) / 500H-F-GSF Parts 28 teeth

Probing	Exploring*	Scaling *
Root Planing	Tooth surface polishing	Plaque control
Alginate combination impression	Silicone impression	

*when doing practice by combining with the dental calculus set

Model Variations



D16FE-500H(GSE) Clear Pink

SRP Jaw Model [D16FE-500H(GSE)-QF]

Jaw model with a clear pink gingiva based on the 500H pink gingiva model. The gingiva is semi-transparent so it is easier to see the subgingival condition.

- Variation**
- D16D-500H(GSE) (with D Articulator) •D16DP-500H(GSE) (with DP Articulator)
 - D16-500H(GSE) (without Articulator)

- Replacement Parts**
- Simple root tooth model / A5A-500 •Gingiva for 500H (clear pink) / 500H-F-GSE Parts 28 teeth

Probing	Exploring*	Scaling *
Root Planing	Tooth surface polishing	Plaque control
Alginate combination impression	Silicone impression	

*when doing practice by combining with the dental calculus set



D16FE-500H(GSD) Clear

SRP Jaw Model [D16FE-500H(GSD)-QF]

Jaw model with a clear gingiva based on the 500H pink gingiva model. The gingiva is transparent so it is the easiest to see the subgingival condition.

- Variation**
- D16D-500H(GSD) (with D Articulator) •D16DP-500H(GSD) (with DP Articulator)
 - D16-500H(GSD) (without Articulator)

- Replacement Parts**
- Simple root tooth model / A5A-500 •Gingiva for 500H (clear) / 500H-F-GSD Parts 28 teeth

Probing	Exploring*	Scaling *
Root Planing	Tooth surface polishing	Plaque control
Alginate combination impression	Silicone impression	

*when doing practice by combining with the dental calculus set



206H.1 series Simple Root Tooth Model with Furcation Defect Lesion Type



P15FE-206H.1(GSF) Pink

SRP Jaw Model [P15FE-206H.1(GSF)-MF]

Jaw model based on the 500H Model with added lesion condition on the gingiva and alveolar bone, designed with the purpose of learning basic techniques for treating periodontal diseases. In order to do subgingival practice, horizontal resorption has been applied on the entire alveolar bone, and other bone defects have been added on the canine area and on the first molar area. Also, it is possible to practice furcation lesion treatments on the first molar area. Lesion conditions have been added to the gingival area, so plaque control practice on the gingival lesion is possible.

- Variation**
- P15D-206H.1(GSF) (with D Articulator)
 - P15DP-206H.1(GSF) (with DP Articulator)
 - P15-206H.1(GSF) (without Articulator)

- Replacement Parts**
- Simple root tooth model / A5A-500
 - Root furcation tooth model / A2A-233
- | | | | |
|-------|----------------------------|-------|---------------|
| Parts | 7 54321 12345 7 | Parts | 6 6 |
| | 7 54321 12345 7 24 parts | | 6 6 4 parts |

- Gingiva for 206H.1(pink) / 206H.1-F-GSFw

Probing	Exploring*1	Scaling *1
Root Planing *1	Tooth surface polishing	Plaque control *2
Alginate combination impression	Silicone impression	

*1 when doing practice by combining with the dental calculus set
*2 when doing practice by combining with artificial plaque

Model Variations



P15FE-206H.1(GSE) Clear Pink

SRP Jaw Model [P15FE-206H.1(GSE)-MF]

Jaw model with a clear pink gingiva based on the 206H.1 pink gingiva model. The gingiva is semi-transparent so it is easier to see the subgingival condition.

- Variation**
- P15D-206H.1(GSE) (with D Articulator)
 - P15DP-206H.1(GSE) (with DP Articulator)
 - P15-206H.1(GSE) (without Articulator)

- Replacement Parts**
- Simple root tooth model / A5A-500
 - Root furcation tooth model / A2A-233
- | | | | |
|-------|----------------------------|-------|---------------|
| Parts | 7 54321 12345 7 | Parts | 6 6 |
| | 7 54321 12345 7 24 parts | | 6 6 4 parts |

- Gingiva for 206H.1(clear pink) / 206H.1-F-GSE

Probing	Exploring*1	Scaling *1
Root Planing *1	Tooth surface polishing	Plaque control *2
Alginate combination impression	Silicone impression	

*1 when doing practice by combining with the dental calculus set
*2 when doing practice by combining with artificial plaque



P15FE-206H.1(GSD) Clear

SRP Jaw Model [P15FE-206H.1(GSD)-MF]

Jaw model with a clear gingiva based on the 206H.1 pink gingiva model. The gingiva is transparent so it is easiest to see the subgingival condition.

- Variation**
- P15D-206H.1(GSD) (with D Articulator)
 - P15DP-206H.1(GSD) (with DP Articulator)
 - P15-206H.1(GSD) (without Articulator)

- Replacement Parts**
- Simple root tooth model / A5A-500
 - Root furcation tooth model / A2A-233
- | | | | |
|-------|----------------------------|-------|---------------|
| Parts | 7 54321 12345 7 | Parts | 6 6 |
| | 7 54321 12345 7 24 parts | | 6 6 4 parts |

- Gingiva for 206H.1(clear) / 206H.1-F-GSD

Probing	Exploring*1	Scaling *1
Root Planing *1	Tooth surface polishing	Plaque control *2
Alginate combination impression	Silicone impression	

*1 when doing practice by combining with the dental calculus set
*2 when doing practice by combining with artificial plaque



Replacement Tooth Models, Optional Tooth Models



A5A-500

Simple Root Tooth Model (Permanent Tooth) [A5A-500]

Tooth models come pre-fitted with the 206H Series jaw model. The crown portion has an anatomical form. The root form is simplified.

Parts $\frac{7}{7}$ $\frac{54321}{54321}$ | $\frac{12345}{12345}$ $\frac{7}{7}$ 24 teeth

Exploring
Scaling



A2A-233

Root Furcation Tooth Model [A2A-233]

Tooth model with an added root furcation area which comes pre-fitted with the 206H Series jaw model. It is made from a softer material than the A5A tooth model.

Parts $\frac{6}{6}$ | $\frac{6}{6}$ 4 teeth

Exploring
Scaling



A2TA

305

378

Tooth Model for Sealing / Plugging [A2TA-305] [A2TA-378]

A completely transparent tooth model for sealing/plugging. The tooth body is transparent, so it is easier to verify the sealing condition of the filling material.

Parts $\overline{7}$ A2TA-305 $\overline{6}$ A2TA-378

Prophylactic sealing



A2A

287

359

355

299

248

249

288

Abutment-Cavity Preparation Tooth Model [A2A Series]

A2A-233 based tooth model with added various preparations. It can be fitted to the first molar area.

Parts Figuration
Please refer to the list below.

Plugging the filling material
Impression taking
Restoration fitting

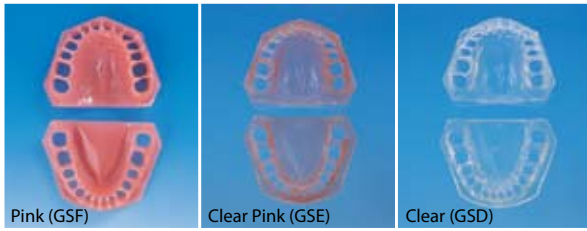
A2A Abutment / Cavity Preparation Tooth Model List

Figuration	Parts	Order No.	Parts	Order No.	Figuration	Parts	Order No.	Parts	Order No.
Full Cast Crown	$\frac{6}{6}$	A2A-287	$\frac{6}{6}$	—	Class I Cavity	$\frac{6}{6}$	—	$\frac{6}{6}$	—
	$\frac{6}{6}$	A2A-266	$\frac{6}{6}$	—		$\frac{6}{6}$	A2A-267	$\frac{6}{6}$	A2A-248
Class I Complex Cavity	$\frac{6}{6}$	—	$\frac{6}{6}$	—	Class II Cavity	$\frac{6}{6}$	—	$\frac{6}{6}$	A2A-321
	$\frac{6}{6}$	—	$\frac{6}{6}$	A2A-359		$\frac{6}{6}$	A2A-249	$\frac{6}{6}$	—
Class II MO Cavity	$\frac{6}{6}$	—	$\frac{6}{6}$	—	Class II MOD Cavity	$\frac{6}{6}$	—	$\frac{6}{6}$	—
	$\frac{6}{6}$	A2A-355	$\frac{6}{6}$	A2A-265		$\frac{6}{6}$	—	$\frac{6}{6}$	A2A-288
Post & Core	$\frac{6}{6}$	A2A-299	$\frac{6}{6}$	—					
	$\frac{6}{6}$	—	$\frac{6}{6}$	—					



Periodontal Area - SCALING / ROOT PLANING AREA

Other Replacement Parts, Option Parts



Lesion Gingiva for 206H.1

Lesion type gingiva pre-fitted to the 206H.1 model.

- MODEL NAME**
- Pink (206H.1-F-GSF)
 - Clear Pink (206H.1-F-GSE)
 - Clear (206H.1-F-GSD)



Tongue Model [Z-1]

Model used for practicing tongue removal. The tongue is fixed with a clip from the rear of the model.



Z1 + D16FE-500H

*Jaw model not included.

Option



Dental Calculus Set



Artificial Plaque



Dental Calculus Set

A room temperature curing artificial dental calculus. 2 colors are available, dark gray and one resembling dental calculus.

Contents
 Powder A (dental calculus color) 8g, Powder B (dark gray) 8g, Liquid material 25mL, Brush 2, glass cup 2, Sand paper

- Separately Sold Items**
- Powder A (dental calculus color) 8g
 - Powder B (dark gray) 8g
 - Liquid 25mL
 - Brush 2
 - Glass cup 1

Exploring
Scaling
Root planing

Artificial Plaque

A pink stained manicure type artificial dental plaque. Its drying time is quick, and has a moderate membrane thickness and adhesion to the tooth model, so it is easy to see the residual condition after brushing.

Capacity
 8mL

Brushing
Flossing

Phantom Head Dental

950 Manchester Road
 Linthwaite, Huddersfield, HD7 5QS

Tel/Ans: 01484 843 100
 Fax: 01484 843 888

Email: sales@phantomhead.com
 Website: www.phantomhead.com



Periodontal Area - PERIODONTAL SURGERY AREA

Periodontal Surgery Model Series presuming various lesion conditions for mastering the Periodontal Surgery Area.

The Periodontal Surgery Model Series offers various gingival lesions as well as horizontal/vertical bone defect patterns, and to realize surgical treatments, all models are fitted with a gingiva that allows incisions and sutures. The series offers models presuming moderate as well as severe periodontitis, and you can select them according to the training purpose.



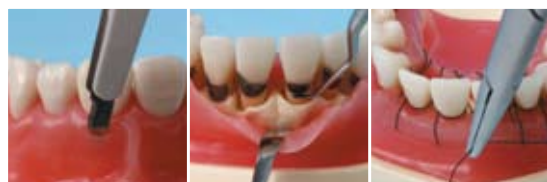
Gingivectomy / 004 Model

The 004 Model offers a swelled form on the mandibular anterior region and the maxillary left molar region gingiva, so you can remove the gingival soft tissue forming the periodontal pocket from the bottom of the pocket. The gingival area uses a material suited for incisions/sutures, so it is possible to practice presuming gingivectomy and gingivoplasty.



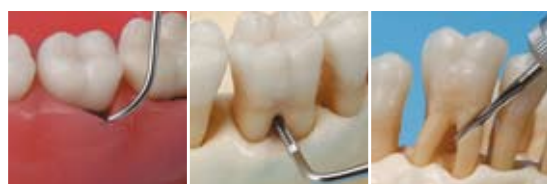
Pocket Curettage Technique • New Attachment Technique / 004 Model

The 004 Model offers a gingival form that presumes a true pocket on the maxillary anterior region, so you can curette inside the periodontal pocket or make incisions towards the bottom of the pocket. Also, the model is fitted with a tooth model with an anatomical tooth root form, so you can be aware of the root form during scaling/root planing.



Flap Surgery / 004 Model, 901C Model

The 004 Model and the 901C Model provides practice for various incision/suture methods, such as the Wildman method during flap surgery and its improvement methods, and how to insert the surgical blade and palatal side continuous suture. Also, you can do practice presuming osteoplasty and guided tissue regeneration method.



Treatment of Furcation Involvement / 901C Model

The 901C Model provides practice presuming the treatment of furcation involvement such as furcation diagnosis, furcation plasty, and tunnel preparation, by the use of tooth models with root furcation and alveolar bone area with vertical bone defect. Also, you can do practice such as trisection presuming root amputation and hemisection.



Periodontal Area - **PERIODONTAL SURGERY AREA**

004 model

Moderate Periodontal Disease Model



P15FE-004

Periodontal Jaw Model [P15FE-004-PS]

A jaw model with a lesion condition presuming a moderate periodontal disease which allows for periodontal practice. The model is fitted with a lesion gingiva, so you can learn basic treatment of gingivitis and periodontitis while experiencing incision feeling. Also, the tooth model has an anatomical form on 1/3 of the root.

- Variation**
- P15D-004-PS (with D Articulator)
 - P15DP-004-PS (with DP Articulator)
 - P15-004-PS (without Articulator)

- Replacement Parts**
- Anatomical simple root tooth model / B1A-004
 - Gingiva for 004 Model / 004-F-GSF Parts 28 teeth

Gingivectomy	Pocket curettage	Flap surgery
Free gingival graft	Frenectomy	Probing
SRP	Temporary splint	

Gingivectomy



The mandibular anterior region and the maxillary left molar region provides a false pocket and a swelled gingival form presuming gingivitis, allowing you to do gingivectomy practice.

Flap Surgery



Provides a vertical bone defect to the maxillary anterior region and mandibular left molar region, allowing you to do practice presuming various flap surgery such as incision, osteoplasty, and sutures.

Frenectomy



The frenulum of the upper lip is attached high, so you can do practice presuming frenectomy.

Pocket Curettage Technique / New Attachment Technique



Provides a lesion condition presuming a true pocket on the maxillary anterior region and the maxillomandibular right molar region, allowing you to practice pocket curettage and new attachment.

Free gingival graft



Provides gingival cleft and dehiscence bone defects to the maxillomandibular right canine region, allowing you to do practice presuming free gingival graft and free connective tissue graft.

Scaling / Root Planing



The model is fitted with a tooth model that has an anatomical form on 1/3 of the root, so you can practice scaling and root planing.



Periodontal Area - PERIODONTAL SURGERY AREA

Root Amputation



Class III furcation involvement is provided on $\overline{6|6}$ $\overline{6|7}$, and allows hemisection and trisection presuming root amputation.

Tunnel Preparation



On $\overline{6|7}$, furcation involvement presuming Class III is provided, thus it is possible to do tunnel preparation which performs recontouring on the alveolar bone.

Replacement Tooth Models



B1A-901C

Anatomical Simple Root Tooth Model [B1A-901C]

Tooth model with dental calculus that is pre-fitted with the 901C Model. It has an anatomical root form on 2/3 of the root, and also includes root furcation.

Parts 31 teeth

Exploring
Scaling

Other Replacement Parts



901C-F-GSF

Gingiva for 901C Model

- MODEL NAME
- 901C-F-GSF



Periodontal Area - PERIODONTAL SURGERY AREA



Tongue Model [Z-1]

Model used for practicing tongue removal. The tongue is fixed with a clip from the rear of the model. Mountable to the 004 Model and the 901C Model.



*Jaw model not included.

Option



Dental Calculus Set



Dental Calculus Set

A room temperature curing artificial dental calculus that provides good workability and moderate adhesion to the tooth model. 2 colors are available, dark and light gray.

Contents
 Powder A (dental calculus color) 8g, Powder B (dark gray) 8g, Liquid material 25mL, Brush 2, glass cup 2, Sand paper

- Separately Sold Items**
- Powder A (light gray) 8g
 - Powder B (dark gray) 8g
 - Liquid 25mL
 - Brush 2
 - Glass cup 1

Other Models



T6-OPE.SET.1



Incision•Suture Practice Kit Ope-Gum [T6-OPE.SET.1]

Model for practicing basic incision and suture methods. You can practice various techniques while experiencing organismically close feeling. For details, please refer to P.62.

Contents
 Base 1, Ope-Gum Sheet T6-OPE.S1 1 sheet

- Separately Sold Items**
- Ope-Gum Sheet T6-OPE.S1 1 sheet

Incision
Periosteal Dissection
Suture



Periodontal Area - PLAQUE CONTROL AREA

Plaque Control Model Series for Mastering Brushing Techniques

The Plaque Control Series offers models that are fitted with anatomical form tooth models, as well as clinically close models that have crowding dentition and implants so you can practice various techniques. By applying artificial dental plaque to these models, you can quickly understand brushing and flossing techniques as you experience the amount of plaque removal.



Brushing Instruction Model [P3D-801]

This model offers crowding dentition, partially erupted tooth, and restorations presuming implants, so you can learn various brush characteristics and techniques through brushing and flossing. Also, by combining with the separately sold artificial plaque, you can practice while experiencing the amount of plaque removal.

Brushing	Flossing	Tooth surface polishing
Tooth anatomy		

Brushing



By practicing with the use of the artificial plaque, you can understand various brushing methods as you experience how to move the toothbrush as well as how much pressure to apply.

Flossing



By combining with the artificial plaque, you can understand various flossing methods.



Periodontal Area - PLAQUE CONTROL AREA



i2D-400C (Pink)



i21D-400C (Clear Pink)

Removable Anatomical Tooth Jaw Model [i2D-400C (pink)]

This model has an anatomical form tooth model fitted to a pink, soft-type jaw, so that it is possible to do basic brushing and flossing practice. Also, the tooth models can be removed and reattached.

Variation

- i21D-400C (with D Articulator) (clear pink)

Replacement Parts

- Anatomical Root Tooth Model / B2-306
- Parts 28 teeth

Brushing	Flossing	Tooth surface polishing
Tooth anatomy		

Tooth Model Variation



B2-306



Anatomical Root Tooth Model

[B2-306]

Tooth model that is a reproduction of the natural tooth which is fitted on the 400C Series.

Parts 28 teeth

Brushing
Tooth anatomy

Option



Artificial Plaque



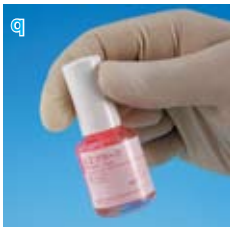
Artificial Plaque

A pink stained manicure type artificial dental plaque. It is easy to see the residual condition after brushing.

Capacity 8mL

Brushing
Flossing

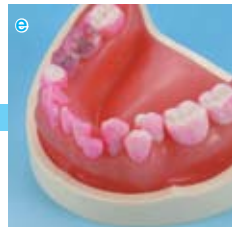
How to use the artificial plaque



Shake the bottle well so it is mixed evenly.



Apply to the tooth model surface using the brush.



Let it dry for about 5 minutes.



Conduct brushing practice.



Other Models



P3B-705

**Brushing Instruction Model** (permanent teeth)
[P3B-705]

This model is twice the normal size, so it is easier to see how the brush is applied and maneuvered during brushing and flossing. Also, since 64 is removable, you can teach how to handle premature contact as well as how to handle fallen teeth.

Related Products

- Instruction Toothbrush [P3-TB]
- Instruction Interdental Toothbrush [P3-IDB]



Technical Information 2



Attaching and Removing the Articulator

How to remove the Articulator



Use the supplied screwdriver and unscrew the 4 articulator screws.

When removing the articulator, depending on the type, the articulator may snap back due to the force of the spring. Please be careful not to have your fingers caught in between.

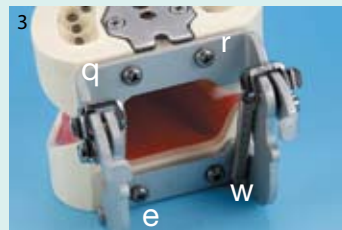
How to attach the Articulator



Lightly tighten the 2 screws on the upper jaw.



Likewise, lightly tighten the lower jaw.



When the model is occluding, tighten the screws in the order shown in the picture.



FE Articulator

This articulator can be fixed at the open and maximum open positions, and allows a variety of occlusal movements.



D Articulator

This articulator can be opened at over 180°. It allows a variety of occlusal movement but cannot be fixed at an open position.



DP Articulator

This articulator is used when practicing using the pole mount. Its functions are the same as the D articulator.

*In order for the articulator to fit, the jaw model needs a screw hole. If you have a model that does not have a screw hole, please contact us.

