



Nissin Patient Education Models



Greetings from the President

We were founded as “NISSIN DENTAL MATERIAL LABORATORY” in 1948, and we began producing Dental Study Models in 1958. To this day, we have gained trust and received support from many people. Our denture materials have been supported by many customers of ours, and as for our dental models, we have received passionate support from dental education institutions around the world. Instead of being complacent about the trust and support we have gained thus far, we pledge that we will continue to listen to your voices and opinions, and provide high quality products that contribute to the dental field as well as useful information which will enrich training.

NISSIN DENTAL PRODUCTS, INC.

President Koji Yokoe
All the staff

Phantom Head Dental

950 Manchester Road
Linthwaite, Huddersfield, HD7 5QS

Tel/Ans: 01484 843 100
Fax: 01484 843 888

Email: sales@phantomhead.com
Website: www.phantomhead.com



TOOTH BRUSHING DEMONSTRATION MODEL



P3D-801

Description

Tooth brushing model for individual education. Ideal for demonstrating how to brush crowded teeth, half-erupted teeth and bridge.

Use

Brushing education for crowded teeth and half-erupted teeth.
Brushing education for bridge and implant.



Half-erupted teeth



Crowded teeth



Bridge



Implant

TOOTH BRUSHING DEMONSTRATION MODEL



P3B-705 (Permanent dentition)

Description

2 times natural size. Adult tooth brushing model with removable teeth(#14 & #16). Ideal for group education.

Use

Demonstration for brushing, interdental brushing, dental floss.
#14 and #16 teeth are removable.



Dental floss



Interdental brushing



Brushing



#14 and #16 teeth are removable.



TOOTH BRUSHING DEMONSTRATION MODEL



P3B-703 (Primary dentition)

Description

2.5 times natural size pediatric model for tooth brushing demonstration. Ideal for group education.

Use

Demonstration for brushing, interdental brushing and dental flossing.

TOOTH BRUSHING DEMONSTRATION MODEL



P3B-704 (Orthodontics)

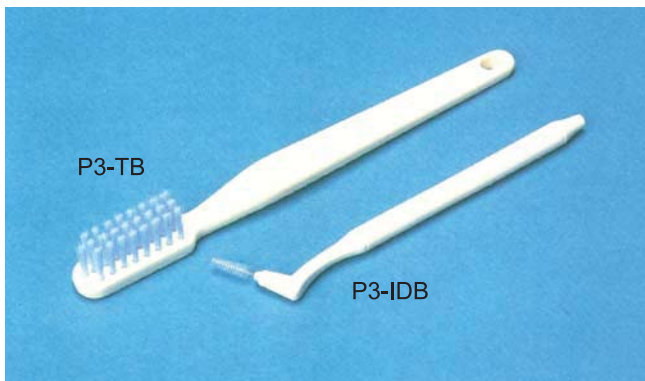
Description

2 times natural size adult tooth brushing model with braces permanently affixed and ligature wire. Ideal for group education.

Use

Brushing demonstration to the patient with dental makeover.

TOOTHBRUSH



P3-TB (Toothbrush)

Description

Toothbrush for P3B-705, P3B-703, P3B-704.

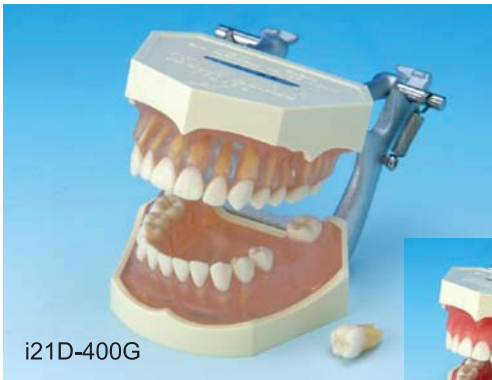
P3-IDB (Interdental brush)

Description

Interdental brush for P3B-705, P3B-703, P3B-704.



STUDY MODEL WITH REMOVABLE TEETH



i21D-400G



i2D-400G

i21D-400G

(Transparent pink silicone gingiva)

i2D-400G

(Pink silicone gingiva)

Description

Upper and lower jaw model with 28 anatomically rooted teeth. Soft silicone gingival allows removal and replacement of teeth.

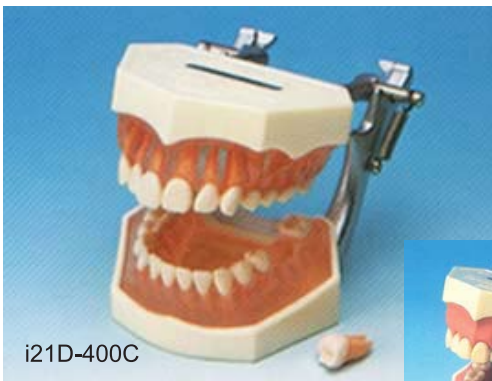
Use

Personal education for brushing.
Explanation for shape of teeth.

Replacement teeth

B3-305

(32 teeth)



i21D-400C



i2D-400C

i21D-400C

(Transparent pink silicone gingiva)

i2D-400C

(Pink silicone gingiva)

Description

Upper and lower jaw model with 28 anatomically rooted teeth. Soft silicone gingiva allows removal and replacement of teeth.

Use

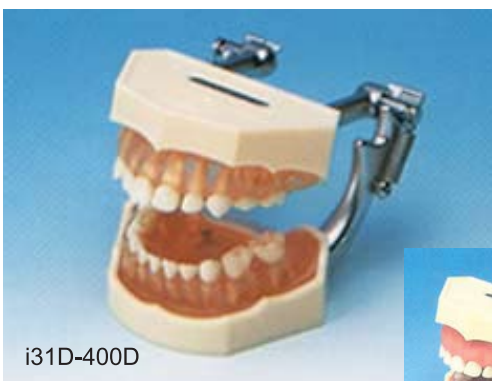
Personal education for brushing.
Explanation for shape of teeth.

Replacement teeth

B2-306

(28 teeth)

STUDY MODEL WITH REMOVABLE TEETH (Primary dentition)



i31D-400D



i3D-400D

i31D-400D

(Transparent pink silicone gingiva)

i3D-400D

(Pink silicone gingiva)

Description

Primary dentition model with naturally colored anatomically rooted teeth. Soft silicone gingiva allows easy removal or replacement of teeth.

Use

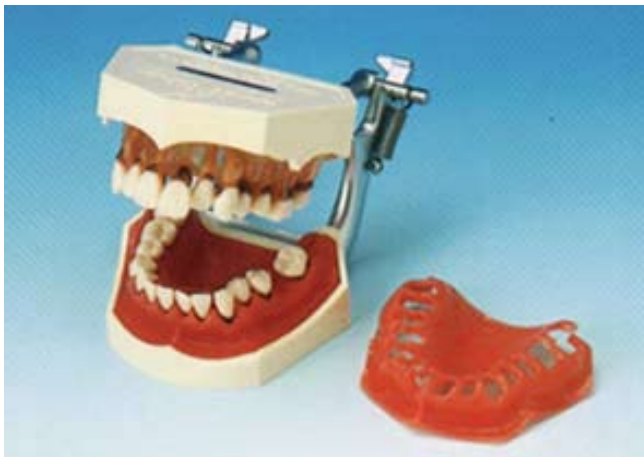
Personal education for brushing.
Explanation for shape of teeth.

Replacement teeth

B4-309B



PERIODONTAL DISEASE MODEL



P15D-008

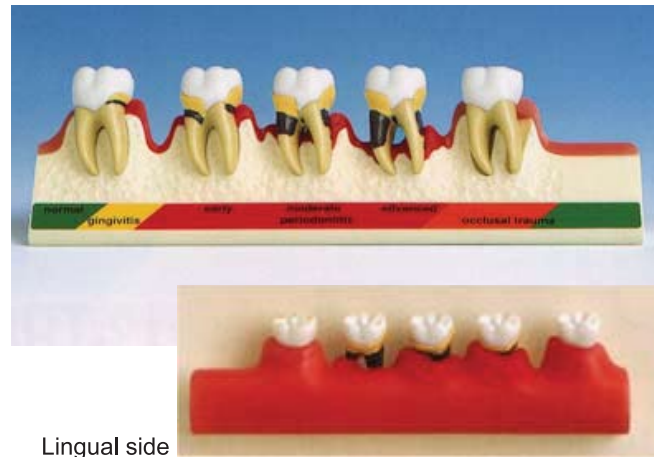
Description

Buccal and lingual gingiva can be easily removed for demonstrating alveolar bone. Allows effective patient education by comparison with X-ray pictures.

Use

Brushing demonstration for gingivitis and periodontitis. Education for subgingival calculus.

PERIODONTAL DISEASES MODEL



P23-PD.1

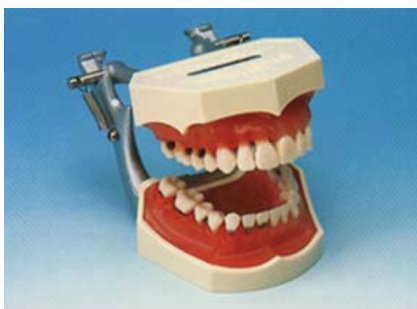
Description

Sagittally sectioned model for visual demonstration of gingivitis and alveolar resorption in a series of 5 stages including normal condition.

Use

Education for periodontal diseases in early to severe stages. **Buccal side:** Education for the condition of the oral cavity. **Lingual side:** Education in comparison with X-ray pictures.

PATHOLOGICAL STUDY MODEL



P2D-001

Description

Demonstrates healthy gingiva on left side and right side shows colored inflamed gingiva with recession and tooth brushing abrasion.

Use

Explanation for exposure of dental root by gingival retraction. Allows easy comparison of diseases side with healthy side.

PERIODONTAL DISEASES MODEL



P15D-004B

Description

Demonstrates inflamed gingiva with calculus.

Use

Education of brushing for gingivitis and periodontitis. Explanation for calculus deposit.

PERIODONTAL DISEASE MODEL



P15D-008A

Description

Identical model of P15D-008 but elongated teeth, missing teeth, gingiva and alveolar bone are in normal condition. Allows easy education by comparison with P15D-008.

Use

Brushing demonstration for gingivitis and periodontitis. Education for subgingival calculus.



Pedo

DEVELOPMENTAL STUDY MODEL



P12P-100B (Age 3)

Description

Transparent model demonstrating permanent and primary dentition in correct eruption pattern. Age 3 years. Growth status is easily visible from any direction.

Use

Demonstration with X-ray pictures enables effective education of brushing for primary dentition.

DEVELOPMENTAL STUDY MODEL



P12P-100A (Age 9)

Description

Transparent model demonstrating permanent and primary dentition in correct eruption pattern. Age 9 years. Growth status is easily visible from any direction.

Use

Education of brushing for mixed dentition. Ideal for education with X-ray pictures.

TRANSPARENT JAW MODEL WITH TEETH



P12P-SB1

Description

Transparent model demonstrating mixed dentition. Allows patient education for treatment and brushing. Effective with X-ray pictures.

Use

Personal education for brushing. Explanation for how the occlusal pressure affects to the root of teeth.

DEVELOPMENTAL STUDY MODEL



P1-600A (Age 3 & 6)

Description

Demonstrates 6-year-old dentition on right side and 3-year-old dentition left side. Removable pink silicone gingiva exposes normal development of teeth.

Use

Demonstration with X-ray pictures enables effective education of brushing for mixed dentition. Brushing demonstration for 6-year molars.

DEVELOPMENTAL STUDY MODEL



P1-600B (Age 5 & 9)

Description

Demonstrates 9-year-old dentition on right side and 5-year-old dentition left side. Removable pink silicone gingiva exposes normal development of teeth.

Use

Demonstration with X-ray pictures enables effective education of brushing for mixed dentition. Brushing demonstration for 9-year molars.

DEVELOPMENTAL STUDY MODEL



P1-600C (Age 9 & 12)

Description

Demonstrates 12-year-old dentition on right side and 9-year-old dentition left side. Removable pink silicone gingiva exposes normal development of teeth.

Use

Demonstration with X-ray pictures enables effective education of brushing for mixed dentition.



Pedo

4X LIFE TIME SEALANT STUDY MODEL



C5-103H.2

Description

Four times natural size model of #46 tooth. Allows observation of sealant from the direction of occlusal surface and mesiodistal surface. Sealant is removable.

Use

Sealant visible from the direction of both mesial and distal side enables intelligible explanation.

4X LIFE TIME SEALANT STUDY MODEL



C5-103H.3

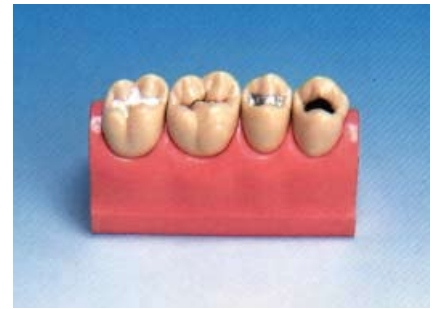
Description

Triparted model of #46 teeth. Four times natural size. Sealant is visible from the direction of both mesial and distal side.

Use

Sealant visible from the direction of both mesial and distal side enables intelligible explanation.

PATIENT EDUCATION MODEL



P23-TR203

Description

Two times natural size. Demonstrates restoration by metal inlay and prevention by sealant for caries treatment.

Use

Education of sealant for caries-preservation. Explanation for progressed caries and restoration by metal inlay.

DEVELOPMENTAL STUDY MODEL



P12P-100C

Description

12-year-old dentition model demonstrating permanent teeth before eruption. Crown & loop and pedo denture are attached for space maintenance for premature loss of teeth.

Use

Education for procedure after early loss of deciduous molar tooth. Demonstration with X-ray pictures enables effective education of brushing for mixed dentition.



Disease

TRANSPARENT PERIODONTAL DISEASES MODEL



P12P-100M

Description

Transparent acrylic resin model. Demonstrates caries, fractured root, pathologies of apical periodontium.

Use

Ideal for the education with X-ray pictures. Allows easy comparison of diseases side with healthy side.

TRANSPARENT PERIODONTAL DECIDUOUS TEETH MODEL



P12P-100R

Description

Transparent acrylic resin model represents 6 years of age. Demonstrates the ectopic eruption at the growing process of mixed dentition.

Use

Education for the permanent teeth and primary teeth at the stage of mixed dentition. Education for apical lesion. Effective with X-ray pictures.

PATIENT EDUCATION MODEL



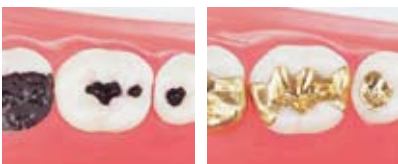
i21-400i

Description

Left side shows the condition before treatment. The condition after treatment is shown on right side. Demonstrates prosthesis case on upper jaw and the case of filling on lower jaw.

Use

Explanation for treatment method depending on different caries condition. Demonstration of cleaning for missing teeth, brushing and flossing.



Disease

4X LIFE SIZE CARIES STUDY MODEL



P13-TR7

Description

Vertically divided tooth model (#16) demonstrating 3 stage of caries (C1 to C3). Four times natural size.

Use

Explanation for the affection of C1 to C3 caries to the dental pulp.

CARIES STUDY MODEL



P8D-508

Description

Demonstrates 4 stages of caries on left side and right side shows healthy condition.

Use

Comparison between caries condition and healthy condition. Brushing demonstration.

MOLAR CROSS SECTION STUDY MODEL



P13-TR9

Description

Vertically divided model of lower right molars demonstrating the condition of teeth visible from occlusal side, buccal side and inside, and the condition of apical lesion and caries. 2.5 natural size.

Use

Education for impacted third molar. Education for secondary caries after placing prosthetic appliance.

MANDIBLE STUDY MODEL



P13-TR10

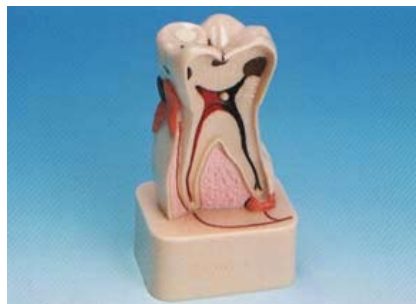
Description

Natural size half mandible with hinged buccal plate showing impaction, abscess and caries.

Use

Education for the condition of caries and pulp. Education for apical lesion with X-ray pictures.

4X LIFE SIZE PATHOLOGICAL STUDY MODEL



P13-TR8

Description

Vertically divided tooth model (#46) demonstrating many different pathologies (caries, dental calculus and dental attrition etc.)

Use

Explanation for affection of the caries to the dental pulp, stages of progress in dentin, and the condition of dental attrition.

4X LIFE SIZE TOOTH MODEL



P13-304D

Description

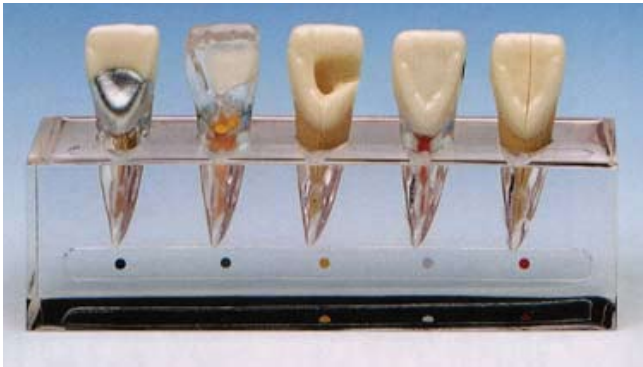
Models of upper cuspid, bicuspid and 1st molar separates into enamel and dentin with removable pulp.

Use

Explanation for tooth anatomy.



PATIENT EDUCATION MODEL



P23-END.1

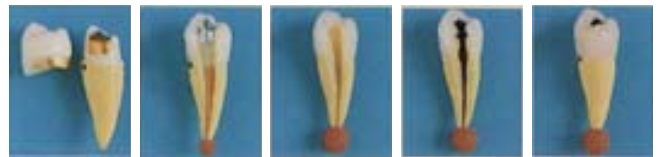
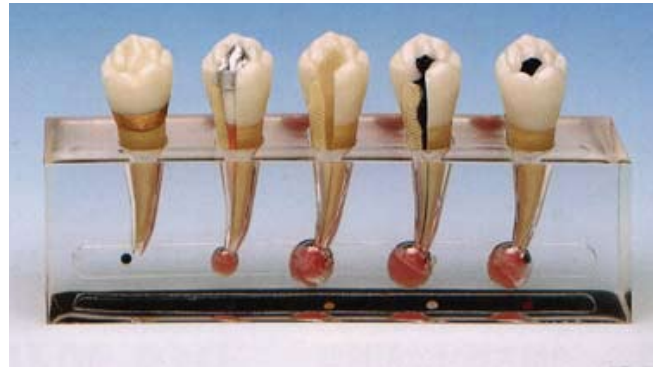
Description

Sagittally sectioned model for visual demonstration of gingivitis and alveolar resorption in a series of 5 stages including normal condition.

Use

Education for the treatment procedures with X-ray pictures.

PATIENT EDUCATION MODEL



P23-END.2

Description

This model visually demonstrates a series of 5 treatment stages during a root canal procedure.

Use

Education of treatment method for apical diseased teeth.
Effective with X-ray pictures.
Visual education for the healing procedure of apical disease.



IMPLANT MODEL



P9-3100

Description

Dental prosthesis on the lower right molars and implant on left molars for explanation of the difference between dental prosthesis and implant.

Use

Explanation for the constitution of denture and the difference of holding style. Education for maintenance of dental prosthesis and implant.



Dental prosthesis



Implant



Maintenance



PLASTIC SKULL MODEL WITH FUNCTIONAL MANDIBULAR



P10-SB.20

Description

Effective patient education tool for jaw movement. Four cylinders attached in the model enable realistic jaw movement.

Use

Education for TMJ and occlusion.

TMJ ILLUSTRATION PANEL



P13-TR11

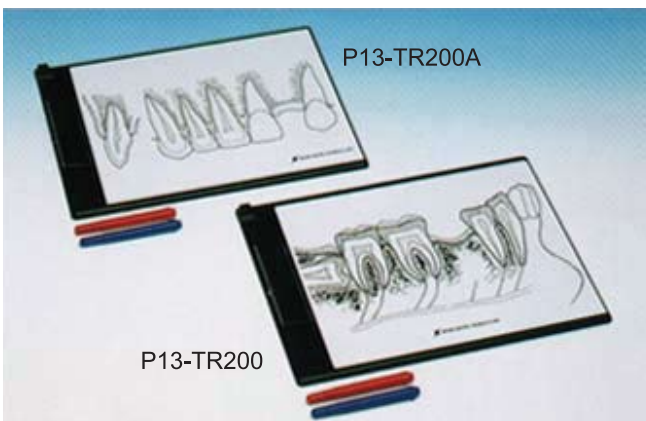
Description

Magnetic board for patient education in describing TMJ problems. Normal class 1 posterior slide insert and anterior slide insert are magnetically attachable.

Use

Education for functional disorder of TMJ.

WHITE BOARD FOR PATIENT EDUCATION



P13-TR200

(Molars)

Description

Dry wipe board describing teeth and parodontium of molars. Red and blue paint-sticks are included for explanation for different cases.

P13-TR200A

(Anterior teeth)

Description

Dry wipe board describing teeth and parodontium of anterior teeth. Red and blue paint-sticks are included for explanation for different cases.

Use

Ideal for communication with patient for suggested treatment planning.



PLASTIC SKULL MODEL



P10-SB.1

Description

Demonstration skull made of epoxy resin. Anatomically rooted teeth B3-SB1 are placed in the model. Cranial bone and jawbone are removable.

Use

Education for TMJ and occlusion.

PLASTIC SKULL MODEL



P10-SB.1A

Description

Demonstration skull made of epoxy resin with removable B3-SB1 teeth. Showing root, nerve and mandible tissue by dividing the left side of mandible.

Use

Education for TMJ and occlusion.

PLASTIC SKULL MODEL



P10-SB.12

Description

Demonstration skull consisted of 10 pieces. Showing median vomer, frontal bone, maxillary antrum and temporal bone etc. Angio and nerves are also shown at buccal part of jaw bone. Teeth are not removable.

Use

Education for TMJ and occlusion.

