

ORAL SURGERY, ORTHODONTICS, RADIATION



Oral Surgery Area	70
Incision Suture Kit	70
Infiltration Anesthesia Model	70
Oral Surgery Model	71



Orthodontic Area	73
Typodont Model Series	73
Malocclusion Model Series	74



Radiation Area	77
----------------------	----



Other Areas - ORAL SURGERY AREA

Oral Surgery Model Series for Mastering Tooth Extraction, Sutures, and other Surgical Treatments

The Oral Surgery Model Series offer models that allow basic incision/suture techniques and infiltration anesthesia practice, as well as models that allow various oral surgery treatment such as tooth extraction and pus removal (incision), and you can make your selection according to the purpose.



Incision • Suture Practice Kit Ope-Gum [T6-OPE.SET.1]

With this kit, you can practice various incision/suture methods while experiencing the feeling that come from the instruments. To closely simulate the gingival region, the sheet area is made from 3 different layers presuming the gingiva, periosteum, and alveolar bone, all of which are interchangeable.

Contents of Kit
Base 1, Ope-Gum Sheet T6-OPE.S1 1 sheet

Separately Sold Items
•Ope-Gum Sheet / T6-OPE.S1 1 sheet

Incision	Periosteal dissection	Suture
----------	-----------------------	--------



Infiltration Anesthesia Jaw Model [P6FE-OOP.4]

A jaw model fitted with a soft type gingiva which allows infiltration anesthesia practice using various techniques. The puncture marks do not remain, so you can repeatedly practice with the model.

Variation
•P6D-OOP.4 (with D Articulator) •P6DP-OOP.4(with DP Articulator)
•P6-OOP.4(without Articulator)

Standard Equipment
•Simple root tooth model / A5A-500 •Gingiva for OOP.4 / OOP.4-F-GUB

Infiltration anesthesia





P15FE-OOP.1

Oral Surgery Jaw Model [P15FE-OOP.1]

Anatomical form tooth models are fitted to the model, and they are fixed to a soft type material presuming periodontal membrane so you can feel the luxation during tooth extraction, and the feeling during periodontal membrane curettage. Also, the model is fitted with a gingiva that allows incisions and sutures, so you can perform various oral surgery practices such as extracting impacted tooth, pus removal (incision), and torus removal.

- Variation**
- P15D-OOP.1 (with D Articulator)
 - P15DP-OOP.1 (with DP Articulator)
 - P15-OOP.1 (without Articulator)

Anesthesia	Normal tooth extraction	Complicated tooth extraction
Impacted tooth extraction	Replantation	Apicoectomy
Pus removal (incision)	Torus removal	Tooth ligation/Intermaxillary fixation

Anesthesia



The model is fitted with a soft type gingiva, so you can practice presuming infiltration anesthesia.

Complicated Tooth Extraction



On the mandibular right wisdom tooth, you can practice gingival incision, desquamation, tooth luxation, curettage, and suture presuming complicated tooth extraction.

Normal Tooth Extraction



With $\overline{61|16}$ $\overline{61|16}$ the tooth models are fixed with a soft type material presuming periodontal membrane, so you can practice various extraction movements.

Impacted Tooth Extraction



The mandibular left wisdom tooth is horizontally embedded, so you can practice bone removal, crown/root division, and extirpation presuming the extraction of impacted tooth.



Other Areas - ORAL SURGERY AREA

Replantation of the Luxated Tooth



By using the post-extraction tooth model, you can do replantation practice presuming luxated tooth such as curettage and resin fixation.

Pus Removal (incision)



The gingival transition area on the mandibular right lateral incisor area provides a liquid presuming pus, so you can practice operative procedures such as pus discharge and draining.

Torus Removal



The model has a torus on the buccal side of the maxillary left molar, so you can perform incision, gingival flap and bone removal using mallets.

Apicoectomy



Provides a soft type material presuming apical lesion on the maxillary right central incisor, so you can do practice presuming bone removal, apicoectomy, and lesion extirpation.



Other Areas - **ORTHODONTIC AREA**

Orthodontic Model Series for
Mastering Various Ortho Techniques

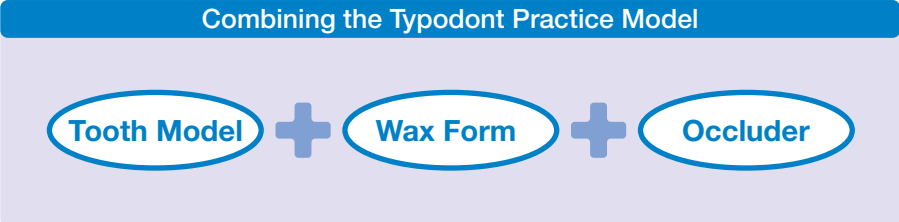


Typodont models



Typodont Practice

By combining together the typodont tooth model, wax form, and third party typodont articulators, you can do various typodont practice.



Tooth Model



B9-500



Typodont Tooth Model [B9-500]

This Typodont Practice Tooth Model has the same form as the A5A-500. To easily fit the band and bracket, the crown portion is made of plastic and the root portion is made of metal.

Parts 28 teeth



B8-320C



Typodont Tooth Model [B8-320C]

An all metal typodont tooth model. The crown portion and the root portion are made of all metal.

Parts 28 teeth



Wax Form



DN3

Wax Form [DN3 Various]

Wax form based on the classification of Angle malocclusion.

Variation

- DN3-X.568 class I
- DN3-X.569 class II division 1
- DN3-X.570 class II division 2
- DN3-X.571 class III
- DN3-X.572 class I (w/o second molar)

Malocclusion models



D1-O22B

D1-O1B

D1-O3A

Occluder



YS-802A

Typodont Occluder [YS-802A]

Typodont occluder that can be attached to various DN3 wax forms.

Resin Malocclusion Model [D1-O Various]

A 1-color resin malalignment model based on the classification of Angle malocclusion.

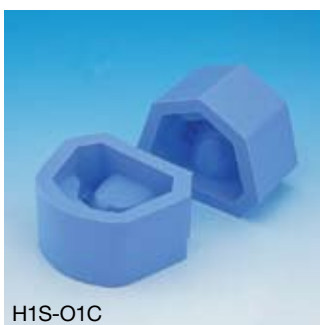
**Cannot attach an articulator to the 3B type due to the occlusion relationship.*





Transparent Resin Malocclusion Model [P12P-O Various]

A transparent type model with the same dentition as the D1-O model series. The 3B type does not come with an articulator.



Plaster Model Mold (malocclusion) [H1S-O Various]

A plaster model mold with the same dentition as the D1-O model series.

Included
Upper/Lower jaw 1 each

D1-O Various / P12P-O Various / H1S-O Various Figuration List

Model No.	Classification	Model No.	Classification	Model No.	Classification
1A	Class I Reversed Occlusion	21A	Class II Division 1 Deep Overbite	3A	Class III Reversed Occlusion
1B	Class I Diastema	21B	Class II Division 1 Crowding	3B	Class II Reversed Occlusion
1C	Class I Crowding	22A	Class II Division 2 Deep Overbite	1BN	Retention Device Preparation Model for condition after the O21B orthodontic treatment.
		22B	Class II Division 2 Crowding		

**Depends on Angle's classification.*



Other Areas - **ORTHODONTIC AREA**

Other Models



P3B-704

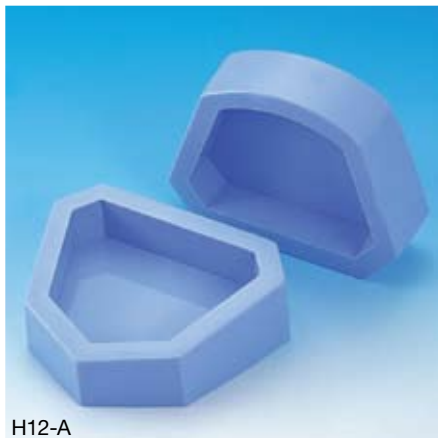


Brushing Instruction Model (Orthodontic) [P3B-704]

A 2X size model with brackets and wires attached for instructing tooth brushing during orthodontic treatment.

Related Products

- Instruction Brush [P3-TB]
- Instruction Interdental Brush [P3-IDB]



H12-A



H12-B



H12-C

Study Model Rubber Former [H12 Various]

A rubber former for fabricating the study model base. 2 former types are offered, one for permanent tooth jaw and another for primary tooth jaw. The permanent tooth jaw former has 2 kinds, a cornered edge type and a rounded edge type.

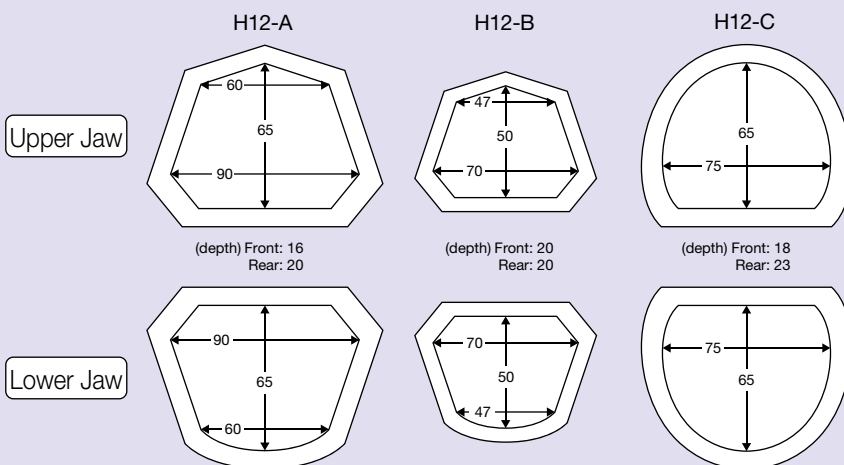
Variation

- Permanent tooth jaw
 - Cornered edge type H12-A
 - Rounded edge type H12-C
- Primary tooth jaw
 - Cornered edge type H12-B

Included

Upper/Lower jaw 1 each

Combining the Typodont Practice Model



Unit of measurement: mm



Other Areas - **RADIATION AREA**

X-Ray Simulator for mastering Dental Radiography



X-Ray Phantom

X-Ray simulator for practicing dental radiography use. The jaw model, presuming bisecting technique, has anatomical features and is X-Ray compatible, so you can acquire basic X-Ray techniques such as film angle and projection angle for each area to be photographed.

Also, the free-moving finger arm allows you to hold the film at the position of your choice, so you can do practice presuming 10 or 14 exposures individually.

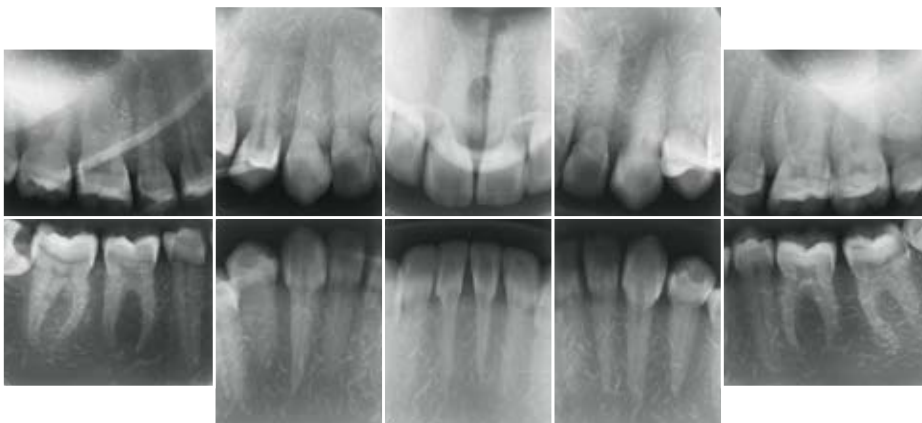
The phantom unit is stored inside a suitcase type trunk so you can easily install it, such as setup on the chair or on its own.

Set Contents

Head base unit, Mask, Jaw model P27-XR.1, Articulator, Trunk, Desk clamp unit

Bisecting Technique	Occlusal Projection	
---------------------	---------------------	--

10 Exposure Method



Set Contents



Head Base Unit



Mask



Jaw Model P27-XR.1



Articulator



Desk Clamp Unit



Trunk Unit

Phantom Head Dental

950 Manchester Road
Linthwaite, Huddersfield, HD7 5QS

Tel/Ans: 01484 843 100
Fax: 01484 843 888

Email: sales@phantomhead.com
Website: www.phantomhead.com





Attaching and Removing the Gingiva

Technical Information 3

How to remove the gingiva



1 Remove every other tooth model. (Refer to "Removing the Tooth Model" / P18)



2 The gingiva is made from a very delicate material.

It may tear or stretch if pulled strongly or hooked with a sharp object. Please handle with care.

How to attach the gingiva



1 Fit the gingiva onto the model.



2 Insert the tooth models.



3 Fix the tooth models by tightening the fixing screw.

