

CONSERVATIVE DENTISTRY



Operative Dentistry 43



Endodontics Area 50

S Series Model 51

A Series Model 52

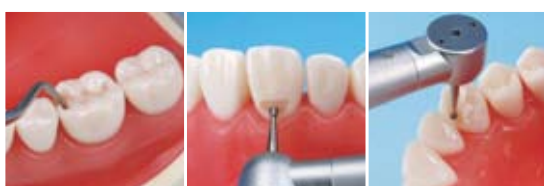
B Series Model 53



Conservative Dentistry - OPERATIVE AREA

The 500E Series. A Wide Variation for Mastering the Operative Area.

The first step in learning operative techniques requires understanding things such as how to handle cavity preparation and how to use rubber dam sheets. Therefore, it is essential to comprehensively practice basic techniques. The 500E Series has functions that are necessary for learning various operative treatment techniques, and allows you to choose from a wide variety of offerings. Also, by combining with a variety of optional tooth models, you can step up to a more practical technique training.



Cavity Preparation / All 500E Series

All models in the series come equipped with tooth models that are ideal to use with air turbine handpieces and contra-angle handpieces, so that it is possible to experience the cutting feeling. Also, the jaw models are shaped wide towards the labiobuccal transition area so that it is easier to perform anterior teeth jaw area cavity preparation.



Rubber Dam Isolation Technique (Dry-Field) / All 500E Series

To allow easy attachment of the rubber dam clamp, the gingiva is lowered and the crown area is exposed. Also, the embrasure is made wider so it is easier to attach matrix bands and wedges.



Impression Taking / All 500E Series

There is a soft type and a hard type model for the gingiva, and models which are fitted with the soft type gingiva allowing for a complete training, from gingival retraction to impression taking.



Expanding Training Uses with Optional Tooth Models



A More Practical Cavity Preparation / A20A, A22A, A55A

By replacing the tooth models with the A20 Series which possess superior cutting characteristics, with the A22 Series which have a pulp chamber, or with the A55 Series which simulates the wedge-shaped defect, it is possible to do a more clinical training that takes the removal amount of the tooth substance into consideration. → P42



Plugging the Filling Material / A55A, A50A

By combining with tooth models that you have performed cavity preparations on, or with the A55/A50 Series that have pre-prepared cavity preparations, it is possible to do operative practice using various filling materials and matrix bands. → P43



Minimal Intervention / A26A

By replacing with the A26 Series which assumes different caries types, it is possible to practice removing softened dentin and to implement a more practical training that takes the removal amount of infected tooth substance into consideration. → P43



Endodontics / S12A, A22A

By interchanging to the S12 or the A22 Series that have pulp chambers and root canals, you can practice the series of procedures up to root canal filling as you experience the feeling during pulp chamber roof removal and root canal enlargement. → P42



D18FE-500E



Operative Jaw Model [D18FE-500E]

Jaw model fitted with a soft type gingiva that allows comprehensive operative training. It also allows accurate impression taking using silicone impression material.

Variation

- D18D-500E (with D Articulator) •D18DP-500E (with DP Articulator)
- D18-500E (without Articulator)

Replacement Parts

- Simple root tooth model / A5A-500 •Gingiva for D18-500E / 500E-F-GUB Parts 28 teeth

Cavity preparation	Rubber dam attachment	Plugging the filling material
Gingival retraction	Alginate combination impression	Silicone impression
Restoration fabrication/fitting	Fluoride application	



D16FE-500E(GSF) Pink



Operative Jaw Model [D16FE-500E(GSF)]

Jaw model fitted with a pink soft type gingiva. Due to a more elastic material than the D18 model, it is easier to insert the gingival retraction thread.

Variation

- D16D-500E(GSF) (with D Articulator) •D16DP-500E(GSF) (with DP Articulator)
- D16-500E(GSF) (without Articulator)

Replacement Parts

- Simple root tooth model / A5A-500 •Gingiva for D16-500E (pink) / 500E-F-GSF Parts 28 teeth

Cavity preparation	Rubber dam attachment	Plugging the filling material
Gingival retraction	Alginate combination impression	Silicone impression
Restoration fabrication/fitting	Fluoride application	



Conservative Dentistry - OPERATIVE AREA



D16FE-500E(GSE) Clear Pink



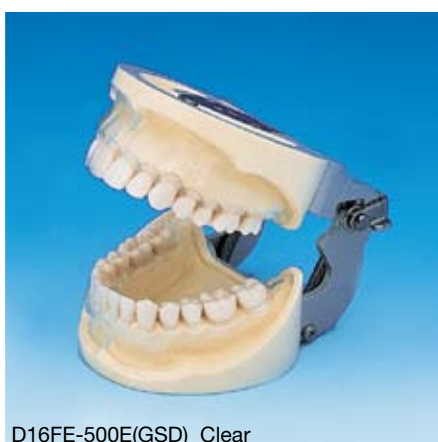
Operative Jaw Model [D16FE-500E(GSE)]

Jaw model fitted with a clear pink soft type gingiva. Because the gingiva is semi-transparent, it is possible to verify the subgingival margin and the gingival retraction thread through the gingiva.

- Variation**
- D16D-500E(GSE) (with D Articulator) •D16DP-500E(GSE) (with DP Articulator)
 - D16-500E(GSE) (without Articulator)

- Replacement Parts**
- Simple root tooth model / A5A-500 •Gingiva for D16-500E (clear pink) / 500E-F-GSE Parts 28 teeth

Cavity preparation	Rubber dam attachment	Plugging the filling material
Gingival retraction	Alginate combination impression	Silicone impression
Restoration fabrication/fitting	Fluoride application	



D16FE-500E(GSD) Clear



Operative Jaw Model [D16FE-500E(GSD)]

Jaw model fitted with a clear soft type gingiva. Because the gingiva is transparent, areas such as the subgingival margin are the easiest to see out of the entire 500E Series.

- Variation**
- D16D-500E(GSD) (with D Articulator) •D16DP-500E(GSD) (with DP Articulator)
 - D16-500E(GSD) (without Articulator)

- Replacement Parts**
- Simple root tooth model / A5A-500 •Gingiva for D16-500E (clear) / 500E-F-GSD Parts 28 teeth

Cavity preparation	Rubber dam attachment	Plugging the filling material
Gingival retraction	Alginate combination impression	Silicone impression
Restoration fabrication/fitting	Fluoride application	



D51FE-500E



Hard Gingiva Jaw Model [D51FE-500E]

Jaw model fitted with a hard type gingiva made especially for preparation practice. Because it has a hard gingiva subgingival practice is not possible.

- Variation**
- D51D-500E (with D Articulator) •D51DP-500E (with DP Articulator)
 - D51-500E (without Articulator)

- Replacement Parts**
- Simple root tooth model / A5A-500 Parts 28 teeth

Cavity preparation	Rubber dam attachment	Plugging the filling material
Gingival retraction	Alginate combination impression	Silicone impression
Restoration fabrication/fitting	Fluoride application	



Replacement Tooth Models, Optional Tooth Models



Simple Root Tooth Model (Permanent Tooth) [A5A-500]

Tooth models come pre-fitted with the 500E Series jaw model. The crown portion has an anatomical form.

Parts 28 teeth

Cavity preparation



Cutting Tooth Model [A20A-500]

Tooth model has a difference in cutting characteristics between the enamel and dentin. The cutting feel is made closer to the natural tooth than the A5 tooth model.

Parts $\frac{7654321}{76543} | \frac{1234567}{34567}$ 24 teeth

Cavity preparation



Wedge-shaped Defect Tooth Model [A55A-139B, 149B, 239D]

A W.S.D. cavity preparation practice tooth model presuming a wedge-shaped defect.

Parts $\frac{3}{4}$ A55A-139B $\frac{3}{4}$ A55A-239B
 $\frac{4}{4}$ A55A-149B

Cavity preparation



Caries Tooth Model [A26A-series]

A caries tooth model based on the A20 tooth model that has superior cutting characteristics.

**Please contact us for pricing and for parts that can be special ordered (custom made).*

Cavity preparation
Soft dentin removal



Endodontic Tooth Model [A22A-500]

This tooth model takes the A20 model that has superior cutting characteristics, and added a pulp chamber and root canal that has a red stained pulpal wall.

Parts $\frac{6}{65} \frac{4}{56} \frac{1}{56} | \frac{1}{56} \frac{4}{56} \frac{6}{56}$ 10 teeth*

Pulp chamber opening
Root canal enlargement
Root canal filling
Cavity preparation

**Anterior teeth and lower premolars have screws penetrating the root canal due to their fixation to the jaw model. Please use the screw-less version if this hinders the training.*

Variation

- Screw-less version A22-500



Endodontic Tooth Model [S12A-500]

A tooth model with a pulp chamber and root canal that has a red stained pulpal wall. The root portion is transparent so that it is easy to see.

Parts $\frac{6}{65} \frac{4}{56} \frac{1}{56} | \frac{1}{56} \frac{4}{56} \frac{6}{56}$ 10 teeth*

Pulp chamber opening
Root canal enlargement
Root canal filling

**Anterior teeth and lower premolars have screws penetrating the root canal due to their fixation to the jaw model. Please use the screw-less version if this hinders the training.*

Variation

- Screw-less version S12-500



Conservative Dentistry - OPERATIVE AREA



Cavity Preparation Tooth Model [A55A/A50A Series]

A variety of cavity preparation types using the A5 tooth model as a base.

Parts Please refer to the list below

Plugging the filling material
Impression taking
Restoration fabrication•fitting



Evaluation Tooth Model for Cutting Practice [A5SA-500]

Evaluation tooth model that has a matte-finish surface with the same cutting feeling of the A5 tooth model. It is possible to measure the shape using laser.

Parts $\frac{6}{6} \frac{4}{4} \frac{2}{4} \frac{1}{6} \frac{1}{4} \frac{2}{6} \frac{6}{6}$ 12 teeth

Cavity preparation
Cutting evaluation

A50A / A55A Abutment / Cavity Preparation Tooth Model List

Form	Part	Order No.	Part	Order No.	Form	Part	Order No.	Part	Order No.
Class I Cavity	4	A55A-143 (A)	4	A55A-243 (M)	Class II MOD Cavity	4	A50A-146 (M)	4	A50A-246 (M)
	5	A55A-153	5	—		5	A50A-156 (M)	5	A50A-256 (M)
	6	A55A-163 (A)	6	A55A-263 (M)		6	A50A-166 (M)	6	A50A-266 (M)
	7	—	7	A55A-273		7	—	7	A50A-276 (M)
	4	—	4	A55A-343 (A)		4	—	4	—
	5	A55A-453 (M)	5	A55A-353 (M)		5	A50A-456 (M)	5	—
	6	A55A-463 (A)	6	A55A-363 (M C)		6	A50A-466 (M)	6	A50A-366
Class II MO Cavity	7	A55A-473 (C)	7	A55A-373 (M)	7	—	7	—	
	4	A55A-144 (A)	4	A55A-244 (A)	Class II OD Cavity	4	—	4	—
	5	A55A-154 (A)	5	A55A-254 (A)		5	—	5	—
	6	A55A-164 (M)	6	A55A-264 (A)		6	—	6	—
	7	A55A-174 (M)	7	A55A-274 (M)		7	—	7	—
	4	—	4	—		4	A55A-444 (M)	4	—
	5	—	5	A55A-354 (M)		5	A55A-454 (M)	5	—
6	A55A-464 (M)	6	A55A-364 (A)	6		—	6	—	
Class III Cavity	7	A55A-474 (A)	7	—	7	—	7	—	
	1	A50A-113 (M)	1	—	Class V Cavity	1	A55A-115	1	A55A-215
	2	A50A-123 (R)	2	A50A-223 (R)		2	—	2	—
	3	—	3	—		3	A55A-135	3	A55A-235
	1	—	1	—		1	—	1	—
2	—	2	—	2		—	2	—	
Class IV Cavity	3	A50A-433	3	—	3	A55A-435	3	A55A-335	
	1	A55A-114	1	A55A-214					
	2	A55A-124	2	A55A-224					
	3	—	3	—					

*Please refer to P23 for other preparation tooth models.

*Symbols (M) Metal (A) Amalgam (R) Resin (C) Complex Cavity



Other Replacement Parts, Option Parts



Gingiva for D18-500E

- MODEL NAME**
- 500E-F-GUB



Pink (GSF)



Clear Pink (GSE)



Clear (GSD)

Gingiva for D16-500E

- MODEL NAME**
- Pink (500E-F-GSF)
 - Clear pink (500E-F-GSE)
 - Clear (500E-F-GSD)



Z1 + D16FE-500H

Tongue Model [Z-1]

Model used for practicing tongue removal. Can be attached to D18 and D16 type models. The tongue is fixed with a clip from the rear of the model.



*Jaw model not included.

Other Models



T1-PP (with image)



T1-PP (without image)

Preparation Plate [T1-PP (with image print)]

Model for learning basic preparation techniques. It is made of 3 layers with different material and color, and the cutting feeling and amount are visually recognizable.

- Variation**
- T1-PP (without image print)



B20-500



Anatomical Tooth Model for Cutting [B20-500]

Anatomical tooth model made for substitution of extracted tooth. The teeth can be planted in the 500A Series rubber mold. The enamel uses a material which has superior cutting characteristics.

Parts $\frac{76543}{7654} \mid \frac{1234567}{3456}$ 21 parts

Cavity preparation





H1-500AL / H1-500AU

Plaster Model Mold [H1-500A Series]

A rubber plaster model-making former with the same form as the 500A Series jaw model. Each jaw is sold separately.

- Variation**
- Upper jaw H1-500AU
 - Lower jaw H1-500AL

How to Use



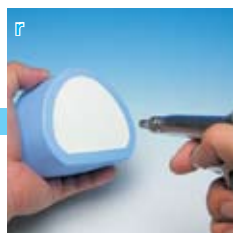
q Lightly spray wax pattern cleaner or debubbler to prevent air bubbles from forming.



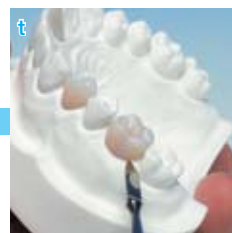
w Plant the tooth models that will be used in practice into the rubber mold.



e Slowly pour the mixed plaster.



r Blow air around the mold and gently remove the model.



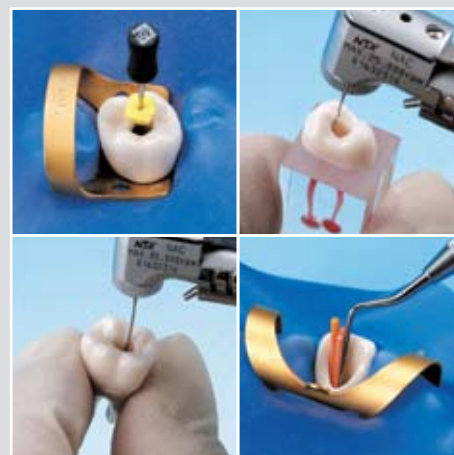
t Remove excess plaster that may have stuck to and around the tooth model.



Conservative Dentistry - ENDODONTICS AREA

A Wide Variation of Endo Model Series for Mastering the Endodontics Area.

The Endo Model Series offers a wide variety of choices according to the purpose and level, allowing fast and easy mastering of root canal treatment techniques. By using these models, you can understand various preparation methods as well as characteristics of instruments such as reamers, while experiencing the feeling during removal of pulp chamber roof and root canal enlargements.



Hand-held Type Practice Models / S Series

The S Series is a model that represents various root canal types inside a transparent block. Models that have only the root canals as well as models with crowns attached allow practicing basic root canal treatment technique methods while experiencing the feeling during root canal preparation.



Jaw model-mounted Type Practice Models / A Series

The simple root tooth model type A Series, which is fitted to the 500E Series Operative Jaw Model, is designed for learning the entire series of procedures from rubber dam attachment to root canal filling. For practicing basic techniques, you can make a selection according to your purpose from a wide variety of models with pulp chambers and root canals.



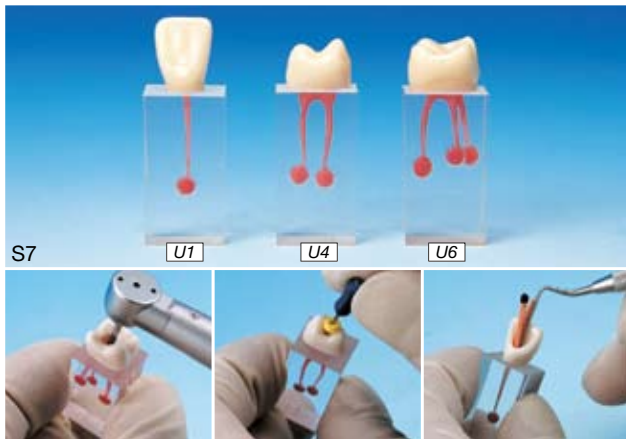
Jaw model-mounted Type Practice Models / B Series

The natural root form B Series allows for a more clinical root canal treatment practice. Basic models with natural tooth root and root canal are available. The models also allow you to feel the different cutting characteristics, and is X-Ray compatible.



S series

Hand-held Type Practice Models



Root Canal Model [S7 Series]

This model has a crown, pulp chamber, and root canal inside a transparent block, and is used for preliminary endodontic practice. The pulpal walls are stained red so it is easy to check the condition of the root canal preparation. Also, a silicone ball is added to the apical foramen to help understand the feeling during perforation.

- Variation**
- Maxillary Central Incisor / S7-U1
 - Maxillary First Molar / S7-U6
 - Maxillary First Premolar / S7-U4

Opening of the pulp chamber	Root canal length measurement *	Root canal enlargement
Root canal filling		

*cannot use electric measurement method

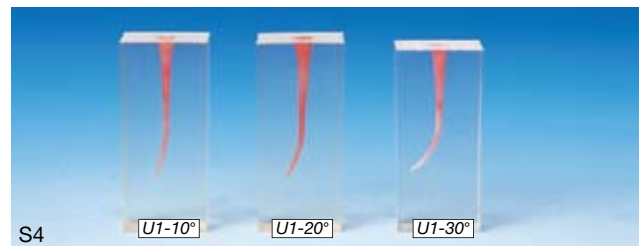
Model Variations



Root Canal Model [S1(Unstained), S2(Stained) Series]

A model with various types of root canals in a transparent block. There are 2 types, the red-stained pulpal wall type and the unstained type.

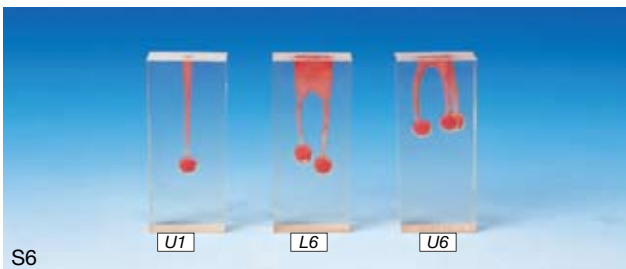
- Variation**
- | | | | |
|-------------|------------------------------------|-------------|------------------------------------|
| Unstained | •Maxillary Central Incisor / S1-U1 | Stained | •Maxillary Central Incisor / S2-U1 |
| pulpal wall | •Maxillary Canine / S1-U3 | pulpal wall | •Maxillary Canine / S2-U3 |
| | •Maxillary First Molar / S1-U6 | | •Maxillary First Molar / S2-U6 |
| | •Mandibular First Molar / S1-L6 | | •Mandibular First Molar / S2-L6 |



Root Canal Model [S4 Series]

A model with various central incisor root canals of differing degree of curvature inside a transparent block. There are 3 different degrees of curvature, 10°, 20°, and 30°.

- Variation**
- 10° curvature / S4-U1-10°
 - 20° curvature / S4-U1-20°
 - 30° curvature / S4-U1-30°



Root Canal Model [S6 Series]

A model with various types of root canals in a transparent block. A silicone ball is added to the apical foramen.

- Variation**
- Maxillary Central Incisor / S6-U1
 - Maxillary First Molar / S6-U6
 - Mandibular First Molar / S6-L6



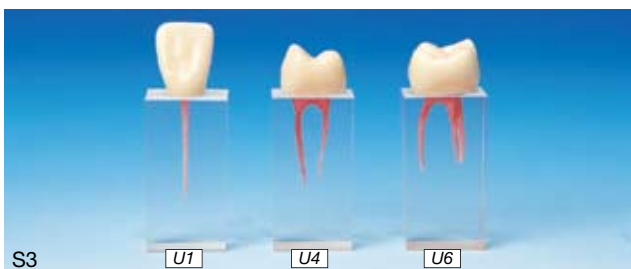
Root Canal Model [S8 Series]

A model with the diameter of the root canal made according to the broach standard. There are 2 different types of root canal curvatures, and each type has a stained and unstained version.

- Variation**
- | | | | |
|--------------------|-------------------|------------------|-------------------|
| Root canal | •S8-BS2-Stained | Root canal | •S8-BC2-Stained |
| curvature straight | •S8-BS2-Unstained | curvature curved | •S8-BC2-Unstained |



Conservative Dentistry - ENDODONTICS AREA



Root Canal Model [S3 Series]

This model has a crown and a pulp chamber and root canal inside the transparent block.

Variation

- Maxillary Central Incisor / S3-U1
- Maxillary First Premolar / S3-U4
- Maxillary First Molar / S3-U6

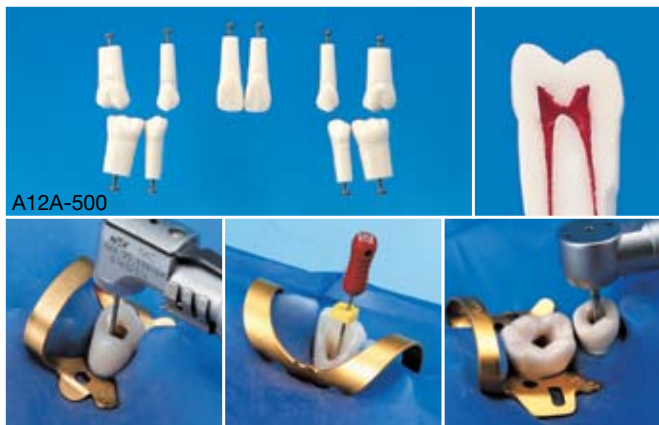


Pulp Cavity Tooth Model (Permanent Tooth) [S12-500]

This model has a pulp chamber and a root canal. The Root portion is transparent so that it is easy to check the preparation condition.

Parts $\frac{6 \ 4 \ 1}{65} \mid \frac{1 \ 4 \ 6}{56}$ 10 teeth

A series Jaw Model-mounted Type Practice Models



A12A-500

Endodontic Tooth Model [A12A-500]

This tooth model has a pulp chamber and a root canal. The pulpal walls are stained red so that it is easy to see preparation conditions such as during root canal enlargement. Also, by combining with the 500E Model, you can practice rubber dam attachments as well as a more clinical endodontic practice.

Parts $\frac{6 \ 4 \ 1}{65} \mid \frac{1 \ 4 \ 6}{56}$ 10 teeth*

*Anterior teeth and lower premolars have screws penetrating the root canal due to their fixation to the jaw model. Please use the screw-less version if this hinders the training.

Variation

- Screw-less version A12-500

Opening of the pulp chamber	Root canal length measurement *	Root canal enlargement
Root canal filling		

*Cannot use electric measurement method

Tooth Model Variations



S12A-500

Endodontic Tooth Model [S12A-500]

A tooth model with a pulp chamber and a root canal that is stained red. The root portion is transparent so that it is easy to check the preparation condition.

Parts $\frac{6 \ 4 \ 1}{65} \mid \frac{1 \ 4 \ 6}{56}$ 10 teeth*

*Anterior teeth and lower premolars have screws penetrating the root canal due to their fixation to the jaw model. Please use the screw-less version if this hinders the training.

Opening of the pulp chamber
Root canal length measurement *
Root canal enlargement
Root canal filling

*Cannot use electric measurement method

Variation

- Screw-less version S12-500



A22A-500

Cross-section

Endodontic Tooth Model [A22A-500]

A tooth model with a pulp chamber and a root canal that has a different cutting feeling between the enamel and dentin.

Parts $\frac{6 \ 4 \ 1}{65} \mid \frac{1 \ 4 \ 6}{56}$ 10 teeth*

*Anterior teeth and lower premolars have screws penetrating the root canal due to their fixation to the jaw model. Please use the screw-less version if this hinders the training.

Opening of the pulp chamber
Root canal length measurement *
Root canal enlargement
Root canal filling

*Cannot use electric measurement method

Variation

- Screw-less version A22-500



Conservative Dentistry - ENDODONTICS AREA



A24A **Endodontic Tooth Model** [A24A Series]

This model, based on the A22A tooth model which has excellent cutting characteristics, has a soft material that presumes the dental pulp. This allows for a more clinically close practice.

**Please contact us for pricing and for parts that can be special ordered (custom made).*

Opening of the pulp chamber	Root canal enlargement
Pulpectomy	Vital pulp amputation

Related Products



Operative Jaw Model [D18FE-500E]

A model with a soft type gingiva that presumes uses such as rubber dam clamp.

- MODEL NAME**
- D18D-500E (with D articulator)
 - D18DP-500E (with DP articulator)
 - D18-500E (without articulator)

Rubber dam attachment
Gingival retraction
Alginate combination impression
Silicone impression

**Please refer to P39 for details.*



Hard Gingiva Jaw Model [D51FE-500E]

A hard type gingiva jaw model with the same form as the D18 Model.

- MODEL NAME**
- D51D-500E (with D articulator)
 - D51DP-500E (with DP articulator)
 - D51-500E (without articulator)

Rubber dam attachment
Gingival retraction
Alginate combination impression
Silicone impression

**Please refer to P39 for details.*

B series Natural Tooth Shape Type Practice Models



B22X

Root Pulp Cavity Model [B22X Series]

A natural root form tooth model which is X-Ray compatible. The model has a different cutting feeling between the enamel and the dentin material, and it has a pulp chamber and a curved root canal. When combined with the JC.22 model, you can perform a more practical root canal treatment such as the electric root canal measuring method.

Opening of the pulp chamber	Root canal length measurement *	Root canal enlargement
Root canal filling		

**Measured using X-Ray method*

Tooth Model Variations



B12-500

Root Pulp Cavity Model [B12-500]

A single construction type model tooth that uses a softer material than the B22 Model. It has a pulp chamber and a curved root canal, and the pulpal walls are stained red.

Parts $\frac{21}{6} | \frac{16}{4}$ 6 teeth

Opening of the pulp chamber	Root canal length measurement *
Root canal enlargement	Root canal filling

**Cannot use electric measurement method*



Related Products



Jaw Model for Measuring Root Canal Length [D50-JC.22]
 A model that allows practice using the electric root canal measuring method. Practice is done using a combination of the B22X series tooth model and the NP-1 paste.

Root canal length measurement
**Measured using electric probe*

D50-JC.22



Electrical Conductive Paste [NP-1]

A paste that possesses electrical conductivity made exclusively for the Model for Measuring Root Canal Length.

Volume 12g

NP-1

How to use the Model for Measuring Root Canal Length



q
 Perform pulp chamber perforation on the tooth model, and clean the inside of the root canal.



w
 Apply the NP-1 paste to the apical foramen area of the tooth model, and let it dry for about half a day.



e
 Fill the NP-1 paste so that it completely covers the metal plate on the bottom of the model.



r
 Plant the prepared tooth model into the jaw model, and fix it with utility wax.



t
 Connect the cord supplied with the jaw model to the root canal length probe.



y
 Connect the cord to the jaw model. Setup is complete.



u
 Measure the root canal length by following instructions on the instruction manual of the probe.

