



## Forest Dental Component Catalogue

LIGHT SERVICE  
ITEMS **1**

HANDPIECE  
CONTROLS **2**

ARM  
SYSTEMS **3**

SYRINGES **4**

FOOT  
CONTROLS **5**

VACUUM **6**

HOLDERS **7**

VALVES **8**

ACCESSORIES **9**

FITTINGS **10**

TUBING **11**

SERVICE  
ITEMS **12**

PARTS  
BREAKDOWN **13**

### Phantom Head Dental

950 Manchester Road  
Linthwaite, Huddersfield, HD7 5QS

Tel/Ans: 01484 843 100  
Fax: 01484 843 888

Email: [sales@phantomhead.com](mailto:sales@phantomhead.com)  
Website: [www.phantomhead.com](http://www.phantomhead.com)



## Arm Systems

### 3 2" DIA. RING MOUNT FLEXIBLE ARM SYSTEMS



Flexible Counterbalanced Arm System with pneumatic brake. Provides 27" vertical travel using the 24" flexible arm. Accommodates arm mounted handpiece control systems with tubing bundles concealed and protected within the arm. Adjustable for weights from 3 to 13-1/2 lbs. Designed for use with 2" dia. post.

DESCRIPTION	PART NO.
26" RIGID w/24" FLEXIBLE ARM HORIZONTAL REACH 66"	1110-771
26" RIGID w/18" FLEXIBLE ARM HORIZONTAL REACH 40"	1110-770
22" RIGID w/24" FLEXIBLE ARM HORIZONTAL REACH 44"	1110-769
22" RIGID w/18" FLEXIBLE ARM HORIZONTAL REACH 38"	1110-768

### TOP POST MOUNT FLEXIBLE ARM SYSTEMS



Flexible Counterbalanced Arm System with pneumatic brake. Provides 27" vertical travel using the 24" flexible arm. Accommodates arm mounted handpiece control systems with tubing bundles concealed and protected within the arm. Adjustable for weights from 3 to 13-1/2 lbs. Designed for use with 2" dia. control post with 1-1/2" ID bearing or Arm Mount III (see pg. 8).

DESCRIPTION	PART NO.
26" RIGID w/24" FLEXIBLE ARM HORIZONTAL REACH 66"	1110-765
26" RIGID w/18" FLEXIBLE ARM HORIZONTAL REACH 40"	1110-764
22" RIGID w/24" FLEXIBLE ARM HORIZONTAL REACH 44"	1110-763
22" RIGID w/18" FLEXIBLE ARM HORIZONTAL REACH 38"	1110-762
12" RIGID w/24" FLEXIBLE ARM HORIZONTAL REACH 32"	1110-761
12" RIGID w/18" FLEXIBLE ARM HORIZONTAL REACH 26"	1110-760

## Phantom Head Dental

950 Manchester Road  
Linthwaite, Huddersfield, HD7 5QS

Tel/Ans: 01484 843 100  
Fax: 01484 843 888

Email: sales@phantomhead.com  
Website: www.phantomhead.com



## Arm Systems

3

### FLEXIBLE ARM



Flexible Counterbalanced Arm System with pneumatic brake, provides 27" vertical travel. Accommodates arm mounted handpiece control systems with tubing bundles concealed and protected within the arm. Adjustable for weights from 3 to 13-1/2 lbs. Designed for use with either top post or ring mounted rigid arm.

DESCRIPTION	PART NO.
24" FLEXIBLE ARM	1110-899
18" FLEXIBLE ARM	1110-898

### 2" DIA. RING MOUNT RIGID ARM



Accommodates all lengths of Flexible Arms with tubing bundles concealed within the arm. Designed for use with 2" dia. post.

DESCRIPTION	PART NO.
26" TOP POST RING MOUNT	1110-537
22" TOP POST RING MOUNT	1110-536

### TOP POST MOUNT RIGID ARM



Accommodates all lengths of Flexible Arms with tubing bundles concealed within the arm. Designed for use with 2" dia. control post with 1-1/2" I.D. bearing or Arm Mount III (see pg. 8).

DESCRIPTION	PART NO.
26" TOP POST MOUNT	1110-527
22" TOP POST MOUNT	1110-526
12" TOP POST MOUNT	1110-525

### BENT RIGID ARM



Accommodates all lengths of Flexible Arms with tubing bundles concealed within the arm. Designed for use with 2" dia. control post with 1-1/2" I.D. bearing or Arm Mount III (see pg. 8).

DESCRIPTION	PART NO.
26" TOP POST MOUNT	1110-464



## Arm Systems

3

### FX 101 FLEXIBLE ARM SYSTEM (RING MOUNT)



A spring assisted Flexible Arm System with manual brake provides 23" horizontal reach with 15" vertical travel. Adjustable for weights for 1-1/2 to 5 lbs. Designed for use with 2" dia. post.

**INCLUDES**

- Flexible arm, 16" with 15" vertical travel
- Rigid arm, 16"
- 2" dia. post mount
- Control mount, 6"

**DESCRIPTION**  
2" DIA. POST MOUNT

**PART NO.**  
1110-076

### FX 101 FLEXIBLE ARM SYSTEM (TOP POST MOUNT)



Same as above except with Top Post Mount. Designed for use with 2" dia. control post with 1-1/2" I.D. bearing or Arm Mount III.

**INCLUDES**

- Flexible arm, 16" with 15" vertical travel
- Rigid arm, 16"
- Top post mount
- Control mount, 6"

**DESCRIPTION**  
TOP POST MOUNT

**PART NO.**  
1110-097

### WALL MOUNT



Designed for mounting all Top Mount Arms to any flat vertical surface and provides leveling adjustment. Mounting plate 6" x 6".

**DESCRIPTION**  
ARM MOUNT III

**PART NO.**  
1110-376

### WALL MOUNT



Designed for clamping a 2" dia. post to any flat vertical surface and provides leveling adjustment. Mounting plate 6" x 6".

**DESCRIPTION**  
POST MOUNT IV

**PART NO.**  
1110-386

### CONTROL MOUNT BRACKET



Designed for mounting handpiece controls to Forest Flexible Arm Systems.

**INCLUDES**

- Mounting bracket
- Plastic cover

**DESCRIPTION**  
12" BRACKET  
9" BRACKET

**PART NO.**  
1110-560  
1110-561

## Phantom Head Dental

950 Manchester Road  
Linthwaite, Huddersfield, HD7 5QS

Tel/Ans: 01484 843 100  
Fax: 01484 843 888

Email: sales@phantomhead.com  
Website: www.phantomhead.com



## Arm Systems

3

### TELESCOPING ARM SYSTEM



Telescoping Arm System provides 28-5/8" to 43-1/2" overall horizontal reach. Designed for mounting assistant's accessories and accepts 1/2" dia. O.D. pin.

**INCLUDES**

- Telescoping arm, 21-1/8" to 36" reach
- Rigid arm, 7-1/2"
- 2" dia. post mount
- Safety release

(Order holder bar separately, see pg. 10)

**DESCRIPTION**  
POST MOUNT

**PART NO.**  
1110-459

### FOLDING ARM SYSTEM I



Folding Arm System with 48" horizontal reach. Designed for mounting assistant's accessories and accepts 1/2" dia. O.D. pin.

**INCLUDES**

- Rigid arm, 16" (3)
  - 2" dia. post mount
- (Order holder bar separately, see pg. 10)

**DESCRIPTION**  
POST MOUNT

**PART NO.**  
1110-436

### FOLDING ARM SYSTEM II



Folding Arm System with 36" horizontal reach. Designed for mounting assistant's accessories and accepts 1/2" dia. O.D. pin.

**INCLUDES**

- Rigid arm, 12" (3)
  - 2" dia. post mount
- (Order holder bar separately, see pg. 10)

**DESCRIPTION**  
POST MOUNT

**PART NO.**  
1110-437

### FOLDING ARM RIGID SECTION



Accepts 1/2" dia. O.D. pin.

**DESCRIPTION**  
16" SECTION  
12" SECTION  
8" SECTION

**PART NO.**  
1110-446  
1110-447  
1110-450



## Arm Systems

3

### ASSISTANT'S HOLDER BAR



For use with Folding or Telescoping Arm System and accepts standard vacuum and universal holders.

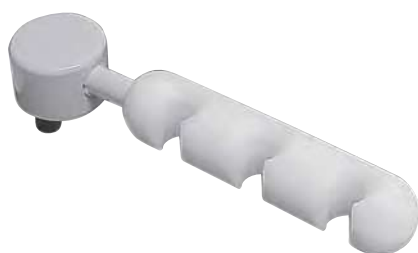
**INCLUDES**

- Holder bar, 8"
- 1/2" O.D. pin

**DESCRIPTION**  
HOLDER BAR

**PART NO.**  
0024-066

### ASSISTANT'S HOLDER BAR

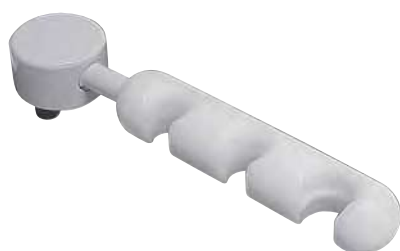


Universal central vacuum holder for use with Folding or Telescoping Arm Systems. Includes 1/2" O.D. pin.

**DESCRIPTION**  
TRI (3 UNIVERSAL)  
QUAD (4 UNIVERSAL)

**PART NO.**  
0024-123  
0024-124

### ASSISTANT'S HOLDER BAR



Standard central vacuum holder for use with Folding or Telescoping Arm Systems. Includes 1/2" O.D. pin. Holds 1 standard central vacuum valve.

**DESCRIPTION**  
TRI (2 UNIVERSAL, 1 STANDARD)  
QUAD (3 UNIVERSAL, 1 STANDARD)

**PART NO.**  
0024-133  
0024-134

### ASSISTANT'S HOLDER BAR



Standard central vacuum holder for use with Folding or Telescoping Arm Systems. Includes 1/2" O.D. pin. Holds 2 standard central vacuum valve.

**DESCRIPTION**  
TRI (1 UNIVERSAL, 2 STANDARD)  
QUAD (2 UNIVERSAL, 2 STANDARD)

**PART NO.**  
0024-135  
0024-136

### UTILITY SHELF ASSEMBLY



Utility Shelf pivots on mounting bracket to provide easy access. 12" x 12" storage surface. Powder coated finish.

**INCLUDES**

- Utility shelf, 12" x 12"
- Mounting bracket

**DESCRIPTION**  
2" DIA. POST MOUNT (INCLUDES 0023-406) 1110-652  
COUNTER TOP MOUNT (INCLUDES 1110-377) 1110-653  
WALL MOUNT (INCLUDES 1110-378) 1110-654  
2" DIA. MOBILE STAND MOUNT(15° ANGLE) 1110-655


## Arm Systems

3

### TUB & TRAY HOLDER



For use with Flexible or Telescoping Arm Systems, the Tub & Tray Holder pivots on a rigid arm to provide easy access. Powder coated finish.

**INCLUDES**

- Utility shelf, 8-3/8" x 12-1/2"
- 12" rigid arm

**DESCRIPTION**  
UTILITY SHELF

**PART NO.**  
1110-744

### ARM MOUNTED TRAY I



Designed for use with Flexible or Folding Arm Systems. May be used as a holder for plastic or stainless steel trays.

**INCLUDES**

- Stainless steel tray holder, 9-3/4" x 13-1/2"
- Wrap around holder bar, 1/2" dia.

**DESCRIPTION**  
FOR FX 101  
FOR FOLDING ARMS  
FOR FOREST FLEX

**PART NO.**  
1110-602  
1110-603  
1110-604

### ARM MOUNTED TRAY II



Designed for use with Folding or Telescoping Arm Systems. May be used as a holder for plastic or stainless steel trays.

**INCLUDES**

- Stainless steel tray holder, 9-3/4" x 13-1/2"
- Mounting bracket with 1/2" O.D. pin
- Wrap around holder bar, 1/2" dia.

**DESCRIPTION**  
WITH HOLDER BAR  
WITHOUT HOLDER BAR

**PART NO.**  
1110-608  
1110-606

### STAINLESS STEEL TRAY



Stainless Steel

**DESCRIPTION**  
TRAY, 9-3/4" x 13-1/2"  
TRAY, 10-5/8" x 15-1/8"

**PART NO.**  
0010-091  
0010-191

### PLASTIC MOLDED TRAY



Molded plastic with nonslip bottom.

**DESCRIPTION**  
TRAY, 9-5/8" x 13-3/8", WHITE  
TRAY, 9-5/8" x 13-3/8", BLACK  
TRAY, 9-5/8" x 13-3/8", GRAY  
TRAY, 6-3/8" x 9-1/4"

**PART NO.**  
0010-200  
0010-200-B  
0010-200-G  
0010-418



## Arm Systems

3

### PLASTIC UTILITY TRAY, POST MOUNTED



Molded plastic with nonslip bottom.

**DESCRIPTION**

2" POST MOUNT, WHITE  
2" POST MOUNT, GRAY  
UTILITY TRAY POST BUSHING  
(1 3/8" DIA TO 1 7/8" DIA)

**PART NO.**

1110-130  
1110-130-G  
1110-131

### FOLDING/TELESCOPING ARM MOUNTS



Designed for mounting Folding and Telescoping Arm Systems to 2" dia. post. Accepts 1/2" O.D. pin.

**DESCRIPTION**

2" POST MOUNT

**PART NO.**

0023-406

### WALL MOUNT



Designed for mounting Folding and Telescoping Arm Systems to any flat vertical surface. Mounting plate 4" x 4". Accepts 1/2" O.D. pin.

**DESCRIPTION**

WALL MOUNT

**PART NO.**

1110-378

### COUNTER TOP MOUNT



Designed for mounting Folding and Telescoping Arm Systems to any flat surface. Mounting plate 4" x 4". Accepts 1/2" O.D. pin.

**DESCRIPTION**

COUNTER TOP MOUNT

**PART NO.**

1110-377

### MOUNTING BRACKET III



Designed for mounting any counter surface on Folding or Telescoping Arm Systems. 4" x 4" mounting plate with 1/2" O.D. pin.

**DESCRIPTION**

MOUNTING BRACKET III

**PART NO.**

1110-380

